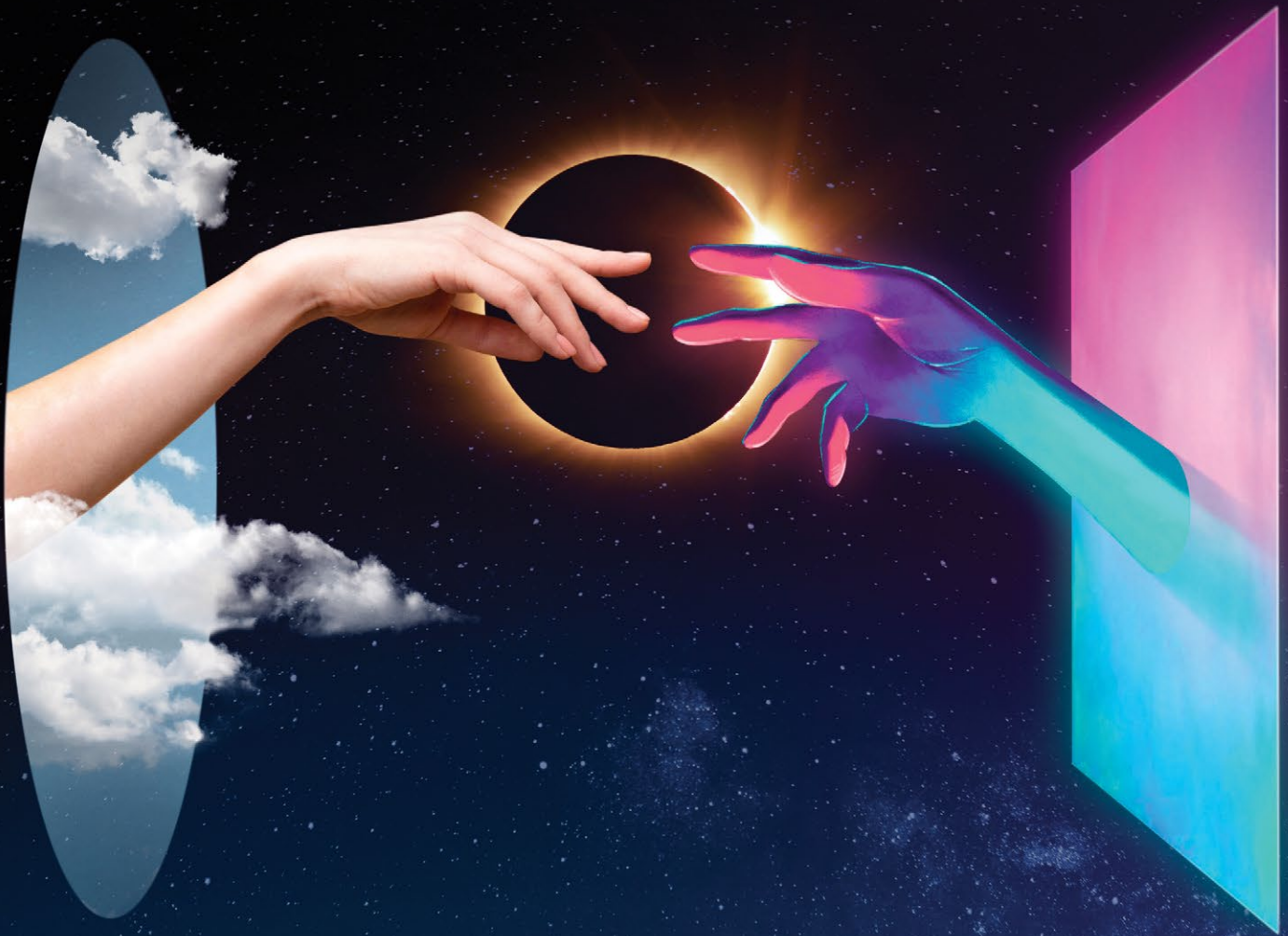


FOR EMPLOYEES ONLY

R

RISE

Minds, Machines and Milestones

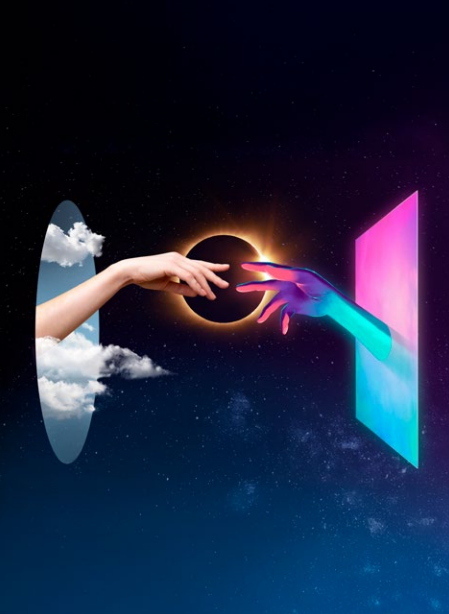


AI transforming
industries

Hitting milestones
in sustainability

Boulder Creek
Wind Farm in
the bag

Personalisation,
the new way of
homebuying



On the cover

This cover conveys that AI is revolutionising industries. The collaboration between human minds and machines is vital for future success, illustrating how this synergy fosters practical advancements.

CONTENTS

04

Silicon Island

Dato’ Szeto Wai Loong, Goh Choo Leng, and Kamarudin Mohd Tahir on the focused drive to build an island.



10

Betty and Dorothy Breakthroughs

TBMs Betty and Dorothy broke through the Sydney Olympic Park tunnel nozzles to rousing applause.

12

Harvesting Wind

Get to know Tom Perkin, DT Infrastructure’s Director of Strategy and Growth in Power and Renewables and the Boulder Creek Wind Farm project win.



DIVINISH UITHAYAKUMAR

The Ipoh-born social media specialist at Gamuda Land is pretty sure the world revolves around football—specifically, Real Madrid. He’s a wannabe chef who loves experimenting in the kitchen, and he has perfected the art of burning toast.



JONATHAN DING

Passionate real estate professional seeking to curate meaningful spaces for generations to come. His idea of a good weekend is playing tennis, reading and catching up with family and friends. His favourite books and podcasts are on leadership, culture, biographies and world events (think Malcolm Gladwell and Yuval Noah).



14

Making of Guantang

Completing the Guantang Marine Bridge project in Taiwan.



18

Gamuda AI Academy

Hear from our first cohort of students about their experiences at the Academy during the launch.



20

Diversifying in the United Kingdom

Our recent acquisition of the Woolwich Purpose-Built Student Accommodation joint venture with Q Investment Partners.



26

Stand the Test of Time

Park Homes is another testament to Gamuda Land’s design of integrated and sustainable living environments.



KAMARUDIN MOHD TAHIR

A Johorean by birth, he was raised a city boy in Kuala Lumpur. As a Gamudian, he has served in the Double Track, Belfield Tunnel and Silicon Island projects. He enjoys spending quality time with his family when he is not fretting over his colleagues’ occupational safety and health.



SANJEETPAL SINGH SIDHU

Born and raised in PJ, Sanjeet pursued his studies in engineering and moved into consulting before joining the Group ESG team. Outside of work, you’ll likely find him sneaking into the gym, binge-watching the latest TV series, or exploring new bars and restaurants around town.

Featured Contributors

Editorial Team

Advisors

Justin Chin Jing Ho
Chu Wai Lune

Content Directors

Dr. Bhavani Krishna Iyer
Ong Jee Lian

Content Creators

Faslika Das
Kaarthiega Anantan
New Jo-Lyn
Sherena Ann

Integrated Designers

Rafy Hamid
Tan Yee Chung

Contributors

Dato’ Szeto Wai Loong
Amarhan Leuchamanan
Anne-Marie Sears
Celina Ong
Clarence Boudville
Divinish Uithayakumar
Elizabeth Negus
Goh Choo Leng
Jamie Pericleous
Jonathan Ding
Kamarudin Mohd Tahir
Loh Yue Vern
Peng Kang Tong
Sanjeetpal Singh Sidhu

Gamuda Berhad’s quarterly internal newsletter, RISE, compiles content from Workplace’s weekly posts and showcases events from our regional offices. The upcoming issue will be released in January 2025. You can pick up a print copy at the Group Corporate Communications and Sustainability (GCCS) Department on Level 13, Menara Gamuda, or read the online edition at rise.gamuda.com.my.


All rights reserved. No part of this newsletter may be reproduced, distributed or transmitted in any form without prior written permission.



FORGING PENANG'S FUTURE WITH SILICON ISLAND

A reflection on Dato' Szeto Wai Loong's leadership that turned a bold dream into reality.

Within the realm of project development and management, the manifestations of resilience are as diverse as the human spirit itself. It transcends mere patience and hard work, evolving into an intricate art of endurance and innovation. Dato' Szeto Wai Loong, Chief Executive Officer of Silicon Island Development Sdn Bhd, at the helm of an extraordinary endeavour, narrates a tale where resilience, akin to a silent symphony, played out against the backdrop of the vast sea south of Penang Island.



“Before my time's curtain falls, I shall walk upon the canvas that rose from nothing, adorned with the pioneering characters and features that whispered promises into existence.”

Dato' Szeto Wai Loong
Chief Executive Officer,
Silicon Island Development
Sdn Bhd



Silicon Island, a 2,300-acre joint venture development with the Penang state government over the next 15 years, will be a catalyst for realising the state's vision to build an environmentally sustainable high-tech industrial hub and world-class tourist destination.

(Fifth to seventh from right) Dato' Szeto with Penang Governor, Tun Ahmad Fuzi Abdul Razak; Penang Chief Minister, Chow Kon Yeow and his entourage; and Gamuda senior management representatives at the "Majlis Jejak Langkah" on 10 December 2023, celebrating the Silicon Island project milestone.

The story began in 2011 when the Penang state government, in collaboration with Halcrow, sought to fashion an effective traffic dispersal system. An ambitious initiative aimed at alleviating the island's traffic conundrum, the state government faced an uphill battle for funding given its opposition status then. Enter Gamuda, armed with an ingenious proposal that merged a reclamation component with the traffic dispersal plan, paving the way for a transformative project.

The journey forward, however, was far from smooth with fierce public scrutiny. Undeterred, Dato' Szeto and his team clung to positivity, echoing the confidence of a driver certain of reaching his destination. After a relentless pursuit, success finally graced their endeavours.

Throughout the years, Dato' Szeto was a steadfast beacon of positivity, infusing his team with confidence in facing adversity. The PSI project is a living testament to the transformative power of patience, evolving from a conceptual plan into a tangible reality.

Yet, Dato' Szeto acknowledges that this triumph extends beyond construction feats. A stakeholder team diligently managed relationships with fishermen, offering a human touch that transformed

their lives. The endeavour was not merely about erecting infrastructure; it was a sincere effort to uplift communities and usher in prosperity.

Reflecting on the legacy of Silicon Island, Dato' Szeto describes it as a visionary dream being realised. A well-designed blueprint, and a Herculean execution culminated in an island that stands as a symbol of humanity's ability to create sustainable, robust spaces in the face of population and economic growth.

Contemplating the road ahead, Dato' Szeto sees Silicon Island as just the beginning. The inaugural steps have been taken, and history awaits the unfolding chapters.

In the dusk of his tenure, Dato' Szeto envisions a destiny where he will blaze a trail in new and undiscovered lands in the vast unknown.

A WHOLE NEW BALL GAME FOR GAMUDA VETERANS

In conversation with the project team.

Accustomed to building infrastructure on land, creating land from the sea is a different story for construction veterans Goh Choo Leng, Gamuda Engineering General Manager and Kamarudin Mohd Tahir, Gamuda Engineering Safety and Health Manager.

Combined, both men brought to Penang years of construction experience from their work on the Gamuda Building Unit, Electrified Double Track Project (EDTP), MRT Kajang and Putrajaya Lines, as well as the Belfield Tunnel project.



Goh (left) and Kamarudin are contributing their years of construction experience to the Silicon Island project.

NEW CHALLENGES

Goh, who has been with Gamuda Engineering for over 12 years, said marine projects present new learning opportunities daily. “Unlike previous projects with more accurate planning, marine works require contingencies due to unpredictable factors like weather and tides, which demand flexibility and adaptability,” he stated.

Managing two dredgers, Diana 23 and Carina 23, have introduced Goh to new challenges, including dealing with marine workers, vessel licensing, work permits, and coordinating with authorities such as the Malaysian Maritime Enforcement Agency. He is also learning about dredgers and nautical terms, drawing on his previous experience with boats.

To Kamarudin, the biggest difference with a reclamation project was managing marine-related risks and dealing with marine authorities. “Scheduling is tricky, as boats have limited capacity and the weather can often delay necessary work, such as sampling when sand carriers arrive,” he said.



Diana 23 (pictured) and its sister vessel Carina 23 dredge sand off Perak's coast for the Silicon Island project. They transport their cargo (sand) to a rehandling pontoon, which pumps the sand directly to the reclamation site.



Excavators are spreading the discharged sand at the filling area on the Silicon Island reclamation site.



Amanda 22, the project's newest vessel, recently arrived in Perak from China. It will dredge locally and transfer the sand to a carrier to be transported to the Penang reclamation site.



(Second and third from left) Kamarudin and Goh meeting site workers at the project's loading bay in Batu Maung, where workers are deployed to the reclamation site daily.

ADAPTING TO A RECLAMATION JOB

To mitigate the unique risks associated with reclamation jobs, Silicon Island conducted thorough risk assessments, resulting in detailed safety procedures and preventive measures tailored to the project.

“Reclamation staff members underwent comprehensive training programmes, including blue card and marine safety training, equipping them with essential knowledge on safety, regulatory compliance, emergency response and hazard identification,” Kamarudin said.

Kamarudin added that the marine work team also received aquatic rescue training, ensuring preparedness for unforeseen sea incidents.

While Kamarudin focused on workers safety, Goh skillfully navigated the project through various challenges, ensuring timely delivery of the manmade island.

“Regular visits from government agencies, such as the Department of Environment and Department of Occupational Safety and Health, ensured compliance with regulations, keeping the project team vigilant and committed to following proper procedures,” Goh said.

GRATIFYING EXPERIENCES

Goh finds overseeing reclamation operations gratifying, as he watches the reclaimed land transform into a vibrant, functional ecosystem. He also values seeing the reclamation team grow together, addressing challenges innovatively while ensuring compliance with stringent environmental regulations.

“All reclamation projects face unique challenges, from unexpected environmental conditions to shifting regulatory requirements,” he said. “Today, we also need to meet long-term sustainability goals by considering ecological and social impacts and engaging local communities for input.”

The Silicon Island project has taught the team to be adaptable and open to collaboration with stakeholders, consultants, and regulators while staying on budget and on schedule.

Kamarudin emphasised the importance of fostering an open safety culture where team members feel comfortable reporting hazards. He also highlighted the critical role of management support in ensuring workers' long-term health and safety by providing necessary resources for training and maintaining a safe work environment.

“It’s an exciting time to be joining Tunnelling Solutions. I look forward to working with the team who have such a strong track record of delivering major projects across Australia, including growing the business in the emerging renewable energy market while keeping the current core business alive and healthy.”



Dr. Serhat Baycan
Chief Executive Officer,
Tunnelling Solutions



Tunnelling Solutions has seen rapid growth, driven by dedicated and skilled office team.



TUNNELLING SOLUTIONS – EXPERTS IN TUNNEL PLANNING AND CONSTRUCTION

Tunnelling Solutions is a wholly owned subsidiary of Gamuda in Australia, specialising in tunnel planning, procurement and delivery of complex infrastructure projects with decades of hands-on experience. Earlier this year, we welcomed Dr. Serhat Baycan to the Gamuda family as the newly appointed Chief Executive Officer of Tunnelling Solutions.

Dr. Baycan’s experience covers three decades, three continents and multiple projects, including Melbourne’s Level Crossing Project, Melbourne Convention Centre, Eureka Tower, Adelaide Oval, Sydney Metro, the Lane Cove Tunnel and Malaysia’s Klang Valley Mass Rapid Transit.

Dr. Baycan brings a wealth of experience to Tunnelling Solutions, adding to the team’s already impressive expertise. His goal will be to develop and execute the

company’s growth strategy in Australia and further expand its infrastructure pipeline, including entry into the energy sector.

“It’s an exciting time to be joining Tunnelling Solutions. I look forward to working with the team who have such a strong track record of delivering major projects across Australia, including growing the business in the emerging renewable energy market while keeping the current core business alive and healthy,” he said.

Joining the Gamuda family in 2022, Tunnelling Solutions provides clients with expert tunnelling resources, including personnel and equipment, technical solutions and on-site management.

Specialist tunnelling knowledge is the accumulation of experience by the Tunnelling Solutions team, acquired around the globe on large tunnelling

infrastructure projects, including the Airport Link Tunnel in Brisbane, EastLink Project in Melbourne and even the Channel Tunnel Project in England.

It’s this experience that makes Tunnelling Solutions a unique offering in the industry and enables the team to provide specialist support throughout a project’s delivery cycle.

Tunnelling Solutions is presently involved in the delivery of Sydney Metro West – Western Tunnelling Package, Coffs Harbour Bypass and the Lake King William Tunnel Construction project in Tasmania.

GAMUDA'S WORLD-FIRST AUTONOMOUS TUNNEL BORING MACHINES MAKE HISTORY IN AUSTRALIA

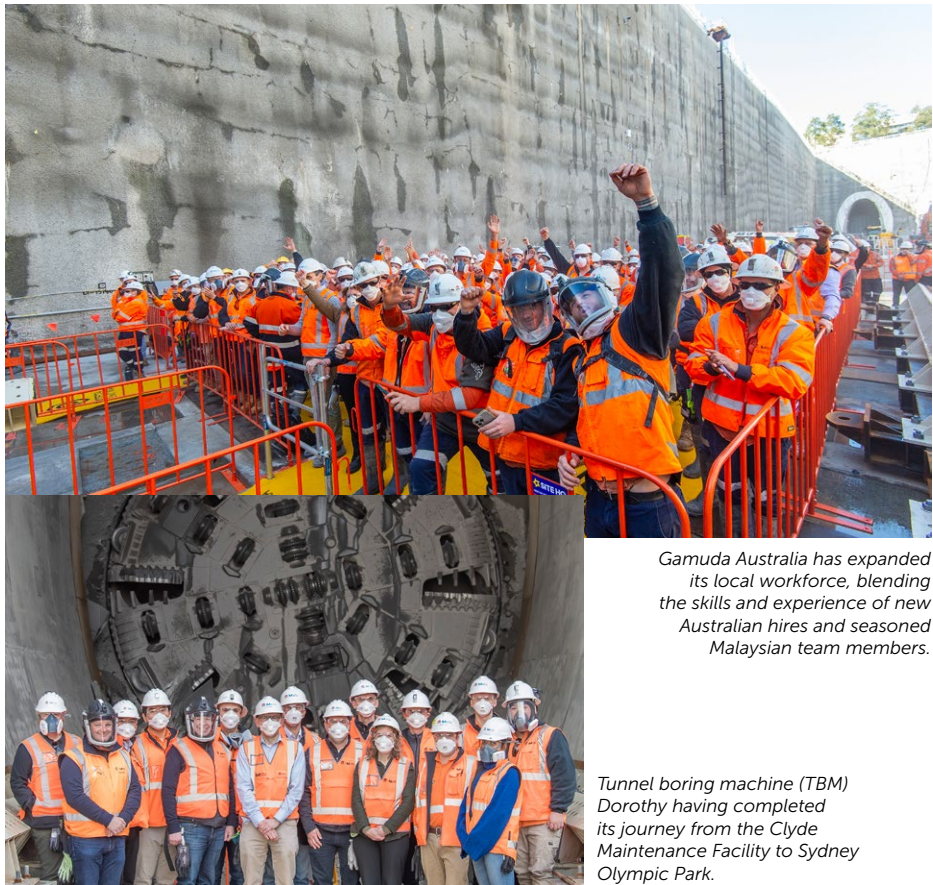
Gamuda has achieved a double milestone with the breakthrough of Australia's first autonomous tunnel boring machines (TBMs) on the Sydney Metro West – Western Tunnelling Package, being delivered by the Gamuda Australia and Laing O'Rourke Consortium (GLC).

This milestone is history in the making, marking both Gamuda's first autonomous TBM breakthroughs in Australia and the nation's first-ever autonomous TBM breakthroughs. The autonomous TBM utilises innovative artificial intelligence software developed by Gamuda, to steer, operate and monitor several TBM functions.

Autonomous TBM Betty and TBM Dorothy broke through the Sydney Olympic Park tunnel nozzles in late June and late July respectively, in front of a 150 strong crowd with members of the Gamuda, Laing O'Rourke, GLC and Sydney Metro teams.

TBM Betty was named after Australia Olympic hero Betty Cuthbert. TBM Dorothy was named after human rights activist Dorothy Buckland-Fuller.

New South Wales Transport Minister Jo Haylen announced the news during a recent visit and media event at the Sydney Olympic Park site shortly after the opening of the Sydney Metro City and Southwest line.



Gamuda Australia has expanded its local workforce, blending the skills and experience of new Australian hires and seasoned Malaysian team members.

Tunnel boring machine (TBM) Dorothy having completed its journey from the Clyde Maintenance Facility to Sydney Olympic Park.

GLC Deputy Project Director Ng Hau Wei said that the autonomous TBMs on the Western Tunnelling Package have performed well with preliminary data showing eight percent savings in power consumption and a tighter adherence to designed tunnel alignment and advance parameters.

"We set out inventing the autonomous TBM to assist our operators to achieve better TBM operational performance. We have done just that, and the operators' wellbeing has also improved," Ng said.

The autonomous TBMs spent 10 months completing the 4.6 km tunnels from Clyde, where the future Sydney Metro West stabling and maintenance facility will be located, to reach Sydney Olympic Park.

TBMs Betty and Dorothy have excavated approximately 857,500 tonnes of material, equivalent to nearly 156 Olympic-sized swimming pools, to complete the first leg of the journey and have installed more than 32,600 concrete precast segments along the way to line the new tunnel walls.

TBMs Betty and Dorothy have been disassembled, lifted out of the Sydney Olympic Park station box and returned to Clyde, where they will be reassembled and relaunched towards Westmead. TBM Betty relaunched on 23 September and Dorothy is expected to relaunch in late October. The TBMs are expected to arrive at Westmead in mid-2025.



ACHIEVED A FROM BBB: OUR ESG RATING CLIMB

We are excited to announce that Morgan Stanley Capital International (MSCI) has upgraded Gamuda's Environmental, Social and Governance (ESG) rating from BBB to A! This achievement marks a significant milestone in our journey since 2020, where we had gone from B to BB in 2021 and 2022, to BBB in 2023 and finally to A in 2024.

CCC – B – BB – BBB – A – AA – AAA
Note: MSCI rating – CCC (worst) to AAA (best)

Our improved rating reflected strong performance in health and safety under the social category. From 2022 to 2023, we reported zero fatalities, which was a key factor in the upgrade.

We also reduced lost-time injury rates (LTIR) and increased the frequency of safety audits and training programmes. These proactive efforts, along with our continued strong focus on preventive safety and worker well-being, were instrumental in driving the significant improvement in our ratings.

Everyone at Gamuda is responsible for achieving the KPI-linked safety performance and risk assessment goals, including the annual target of zero lost-time injury incidents.

In other areas like environmental performance, we are making strides by capitalising on opportunities in renewable energy, expanding our portfolio with solar farms, hydroelectric dams, wind turbines, pumped storage hydropower, and transmission networks. These initiatives position us for stronger results in future ratings.

In governance, our continued commitment to upholding high standards in business ethics from the board to operational levels, including across our overseas operations, is further aligning us with global best practices, setting the stage for even better performance in upcoming evaluations.

MSCI is a global provider of equity, fixed income, real estate indices, multi-asset portfolio analysis tools, ESG and climate products.

Its ESG rating methodology assesses how well a company manages ESG risks and opportunities relative to its global and local industry peers. This provides insights to investors and puts us in favourable standing when it comes to investments that require alignment with ESG performance.

Looking ahead to 2025, Gamuda is commencing its comprehensive Group ESG Internal Audit. This is designed to rigorously assess and strengthen our ESG processes, controls, and performance. By conducting a thorough evaluation internally, as we have already embarked on external ESG audits in the last few years, we aim to ensure that our ESG practices continue to meet the highest standards of sustainability and ethical conduct.

CHANGING AUSTRALIA'S RENEWABLES LANDSCAPE



As DT Infrastructure expands its presence in the renewables sector, we sat down with Tom Perkin, Director Strategy and Growth – Power and Renewables, to discuss what sets us apart in this space.



Explain about your role?

I am responsible for revenue growth in the power and renewables sector. This entails:

- Understanding market themes to ensure optimal positioning for the business.
- Building relationships with all stakeholders, including prospective clients to comprehensively understand the market and project landscape.
- Qualifying projects to ensure a robust and high-quality pipeline.
- Strategy development to improve win probability.

How did you get into the renewables energy (RE) sector?

I am a strong believer in transitioning our energy reliance to a low-carbon solution in the interests of achieving the net-zero goal and securing a better environment for future generations. The power and

renewables sector is in a critical phase of growth and I was drawn to the challenge of working in a sector that is still in its infancy and enthused by the opportunity to add real value to a sustainable future.

What does DT Infrastructure do in power and renewables?

Our focus is utility-scale solar and wind farm developments across Australia. Regarding solar farms, we act as the engineering, procurement and construction (EPC) delivery partner.

To minimise risk exposure, we favour projects that offer sole-sourced early contractor involvement (ECI) processes with cost recovery. This enables DT Infrastructure to thoroughly assess risks (i.e. through site investigations), mitigate where possible and manage appropriately in final binding offers and subsequent delivery contract negotiations.

What sets us apart from our competitors?

The renewables sector, specifically solar and wind generation projects, have traditionally been serviced by lower-tier construction firms. As projects have grown in size and complexity, they now require technically proficient contractors for delivery. DT Infrastructure is a highly

trusted and bankable partner. Being part of the Gamuda Group of Companies gives us access to in-house energy experts and ERS Energy, who is a leading provider of solar energy solutions and have established supply chain relationships to assist with procurement.

Our people delivered projects in the sector, including Chichester Solar Farm, Eyre Peninsula Link, Energy Connect (SA PEC), Chinchilla BESS, Bango Wind Farm and Berrybank Wind Farm. We have the experience and know-how to offer our clients certainty of delivery and improved technical solutions that optimise their project value.

What are our current projects?

DT Infrastructure has a strong pipeline of renewables projects that are being pursued. We have successfully positioned ourselves as the exclusive delivery partner on over AUD1.5 billion of solar/BESS, wind and substation projects including several sole-sourced ECI projects across Australia.

Two advanced opportunities are the 585MW Goulburn Solar and BESS project for Lightsource BP, which have concluded their respective ECI phases and are now moving toward delivery phase contracts.

What’s our expansion plans?

The DT Infrastructure team has been incredibly successful in re-entering the power and renewables sector and is enjoying early success. In the coming months, our focus will swap to delivery as we look to build on our clients’ promise of a ‘safe pair of hands’ and strengthen our reputation in the market – our ability to win new work is built upon our performance on site and our clients judge us on that.

We are forecasting that our power and renewables revenue will contribute AUD800 million per annum to DT Infrastructure over the next five years. We will continue to grow our revenue, product offering and capabilities in a controlled manner through partnerships with selected clients and targeted opportunities.

DT INFRASTRUCTURE BUILDS GAMUDA'S FIRST WIND FARM

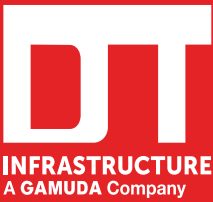
DT Infrastructure has been awarded an AUD243 million (RM702 million) design and construction contract by Aula Energy and Queensland’s CS Energy to construct the Boulder Creek Wind Farm. This is the first wind farm project Gamuda will deliver under DT Infrastructure.

Comprising 38 turbines and at a capacity of 228 MW, it will power approximately 85,000 homes when it commences operations in 2027. This will bolster the State’s effort to reach its target of 70 percent overall electricity supply from renewable energy (RE) by 2032.

It is also a part of DT Infrastructure’s RE growth strategy in the Australian market, combining the Gamuda Group’s international clean energy experience with local delivery expertise.

Our work with Aula during the early contractor involvement (ECI) phase gave us an in-depth understanding of the project, location and needs of the community to ensure the success of Stage 1 of the project.

Site preparatory works are expected to commence before the end of 2024, with site activity ramping up from early to mid-2025.



The construction stage is the next step from the early contractor involvement in March 2023.

BUILDING TAIWAN'S GUANTANG MARINE BRIDGE

G amuda has recently marked another milestone by successfully completing the Guantang Marine Bridge project in Taiwan. Beyond the steel and concrete lies a story of dedication, collaboration, and human ingenuity.

We take you behind the scenes with one of the key figures who brought this project to life—Peng Kang Tong, the project's Section Head of Operation and Construction.

For Peng, the Guantang Marine Bridge was his first foray into marine construction, and the experience was nothing short of transformative. In his multifaceted role, his responsibilities included working closely with our joint venture (JV) partner, Dong-Pi Construction, ensuring the project's smooth execution.

How does it feel to complete this four-year project?

I feel an immense sense of achievement, starting from the foundational work and slowly building everything up. The team and I are incredibly proud to be part of this project.



Peng Kang Tong (right) with Eric Foong Vooi Lin, Regional Director at the Guantang Marine Bridge construction site.

What key factors drove successful collaboration with our JV partner?

Both companies shared the same aim: achieving the highest standards in quality, safety and health. This common goal drove our teamwork and ensured the project's success.

What major construction challenges did the team overcome?

Working at sea presents unique challenges, such as the impacts of wind and waves. We relied heavily on meteorological reports to ensure safe working conditions. A steel box cofferdam kept our team dry, away from the waves, which can average a few metres high, depending on the season. We also used precast segmental box girders to reduce offshore lifting and concreting work and the need to work at height.

We won the Construction Golden Safety Award 2022 and the Excellent Honour in Public Construction Quality Award 2024. How did we maintain top safety and quality standards?

We maintained rigorous standards through frequent audits and checks. If any misalignments or errors were found, we corrected them immediately. Safety reminders were also a daily routine, not just for our employees but also for contractors.

As a Taiwanese, how does it feel working on a Malaysian company's project in Taiwan?

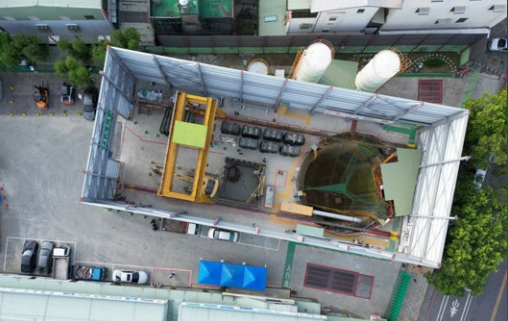
I never expected to work for a Malaysian company in Taiwan, but it's been a great experience. It's given me a better understanding of construction and allowed me to contribute to my country's development.

WHAT'S NEXT IN TAIWAN:



Seawall Taipei Port

- New construction of third and fourth stage seawall for Reclamation Project in Logistics Storage Area, Taipei Port.
- All caisson casting works have been completed.
- Construction of the landside filter layer is currently underway. Once the filter layer is completed, it will be opened to Taipei Port for earthwork collection and use in stages.
- Sand is being backfilled in the caisson compartment of Embankment 3 and caisson capping operations are ongoing.



161kV Songshu to Guangfeng Underground Transmission Line

- Mining through the heart of the local town.
- Noise enclosure is built to full height surrounding tunnel boring machine (TBM) launch shaft 3 due to close vicinity to a neighbourhood.
- Two TBMs are currently mining through sandstone and mudstone layer to complete the 1.5 km and 1.2 km tunnels respectively.
- A section of pipe jacking connecting power station to launch Shaft 1 will be launched in the coming month.



TaoYuan City Underground Railway Project, Package CJ18 PingZhen Commuter Station

- Major work is well underway on CJ18 project, including the construction of the permanent diaphragm wall which serves dual purpose - as retaining wall for 18 m deep cut and cover tunnel as well as the foundation of the temporary rail bearing slab to run the temporary railway track.
- The construction of a temporary railway bridge to enable the railway diversion which involves 15 bored pile foundation (three in the river) has taken place.



Kaohsiung Mass Rapid Transit Yellow Line Package YC01

- Design works e.g. wall retaining structure, alignment, and value engineering ongoing.
- Physical works to start, involving road widening works.



AUTODESK
MEETS GAMUDA:
A DIGITAL
PARTNERSHIP

We recently welcomed Jim Lynch, Senior Vice President of Autodesk Construction Solutions, and his team for their inaugural visit to Malaysia. Since partnering in 2022, Autodesk has been a key player in our digital transformation journey, providing innovative technologies that are setting new industry standards.

“This isn’t your everyday precast plant. When a high-tech facility can manufacture the ‘building blocks’ to create an 8-storey data centre in eight months, you know you’ve witnessed the future of prefabrication.”

Jim Lynch

COME ALONG AS WE TAKE YOU THROUGH THE HIGHLIGHTS OF THE TOUR:

1.

Lynch and his team began at the Gamuda Innovation Hub, where we showcased our digital capabilities like Digital Engineering, Artificial Intelligence (AI), Geospatial Information System (GIS), Augmented Reality (AR), and our in-house developed Gamuda Digital Operating System (GDOS).
2.

Next, John Lim Ji Xiong, our Group Chief Digital Officer, guided Lynch to his firsthand experience at the autonomous Tunnel Boring Machine (TBM) simulator.
3.

Off to our Next-Gen Digital Industrialised Building System (IBS) factory in Banting, where innovation is exemplified through the integration of Autodesk Construction Cloud (ACC), Digital Engineering, and precast technologies.
4.

The tour concluded with a comprehensive overview of Gamuda Cove, where Lynch witnessed the efficient on-site construction of IBS homes.



A QUICK CHAT WITH JIM LYNCH

How has the original vision for the Autodesk-Gamuda partnership evolved since 2022?

The original vision was to advance the global construction industry together. Over the last two years, we’ve learned to enhance our platform from Gamuda, while Gamuda has learned to gain more value from their technology investment from us.

How does Autodesk help Gamuda meet global construction and sustainability standards?

Autodesk and Gamuda envision a safer, more sustainable construction industry. By providing the tools and technologies, we help Gamuda achieve sustainable outcomes while learning from their initiatives towards a greener future.

What new tools can Gamuda expect from Autodesk for future projects?

Autodesk is building a scalable, reliable platform with data as the foundation. We’re investing in common data models, which form the genesis of Autodesk AI, enabling project teams to analyse, automate, and augment processes to drive impactful outcomes.

How can the Gamuda-Autodesk partnership continue driving digital innovation and sustainability in construction?

By continuing to share best practices and pushing industry boundaries together, we can set a global example of how partnerships and innovation can drive a better future for construction.

GAMUDA IN THE
SPOTLIGHT AT
AUTODESK’S AU 2024

Gamuda’s digital innovation takes centre stage at the recent Autodesk University 2024 in San Diego, becoming the first-ever company from the Asia Pacific region to do so. Lim joined Lynch for an exclusive fireside keynote chat during The Design and Make Conference, the world’s premier construction technology conference, with over 30,000 industry professionals in attendance.

The Group showcased how our Gamuda Digital Operating System (GDOS) and Autodesk Construction Cloud are transforming our international projects. From infrastructure to digital engineering leadership, Gamuda’s compelling digital transformative journey through the Innovation Hub and our long-standing partnership with Autodesk are setting new standards in construction technology.

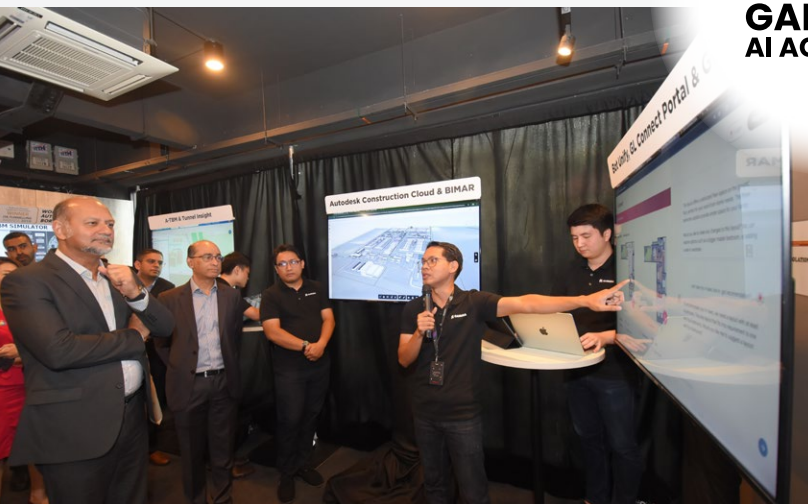


Justin Chin Jing Ho, Gamuda Engineering Managing Director (fourth from left), alongside John Lim, Group Chief Digital Officer (fifth from left) and the Gamuda team, celebrating a successful showcase at Autodesk University 2024.



Watch the insights shared during the session





TRANSFORMATIVE POWER OF AI

“As we take the next step to forge a new generation of skilled professionals and AI innovators, it demonstrates that private corporations are invested in bridging the AI talent gap, in line with national digital transformation goals.”

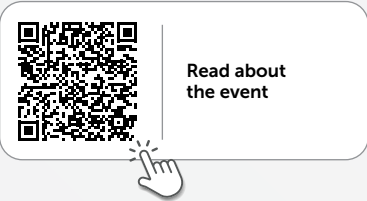
John Lim Ji Xiong,
Group Chief Digital Officer

Marking Gamuda’s strategic shift towards digital construction and advancing Malaysia’s engineering ecosystem, we unveiled the Gamuda AI Academy in early October. The first of its kind for Malaysia’s construction industry, the academy signals a new era of how we are revolutionising industries and developing people through artificial intelligence (AI).

The event was officiated by YB Tuan Gobind Singh Deo, the Minister of Digital Malaysia, who was joined by our long-term partner Google Cloud (represented by Serene Sia, Country Director of Malaysia and Singapore), representatives from the ministry, Malaysia Digital Economy Corporation (MDEC), Khazanah Nasional, MyDIGITAL Corporation, 500 Southeast Asia and Dagang NeXchange.

“The Ministry welcomes collaboration from the private sector on developing digital-ready talent. The academy plays a role in bolstering the National AI Roadmap and Digital Economy Blueprint,” said YB Gobind Singh.

Echoing the Minister, Sia reiterated Google Cloud’s partnership ecosystem as it expands in the Malaysian market, “The Gamuda AI Academy is an example of what can happen when industry and government join forces with a shared vision. We are proud to be Gamuda’s partner, providing the expertise and resources to make the academy a success. Let’s continue to work together to create a world where AI is accessible and helpful to everyone.”



Read about the event

THE FIRST COHORT OF 42 STUDENTS BEGAN THE COURSE ON 2 SEPTEMBER. HERE’S WHAT THEY HAD TO SAY!



Haniza Zainal Abidin,
26 years old
Data scientist

As a self-taught coder, I wasn’t familiar with industry-standard coding, that’s why I joined the Gamuda AI Academy. The ideation and deployment process we’ve learned here will be helpful in the workplace. I plan to develop computer vision and machine learning solutions to drive sustainable practices in the agri-tech industry.



Tan Yee Peng,
42 years old
Freelancer

After decades in the telecommunications industry (from 3G to 5G), I see AI as a game-changer that can unlock the full potential of 5G for businesses and provide personalised customer experiences. I’m also excited to explore network slicing for secure private networks. Our capstone project will leverage data to solve a tyre shop’s business problems, like increasing visibility and creating a customer AI chatbot.



Safea binti Ramli,
24 years old
Web development
freelancer

I’ve always been fascinated by AI advancements and this programme will be my gateway to becoming part of that innovation. We not only focus on technical aspects but real-world applications in deploying machine models. I want to become a software engineer and develop AI solutions for complex problems and improve user experiences. It will be professionally and personally rewarding.



Joel Ezra Joe,
23 years old
Mechanical engineering
graduate

My decision to transition to cloud computing and generative AI stems from the growing importance of intelligent systems in shaping the future of industries. The Gamuda AI Academy offers networking events, which puts me out there, where I’ve learnt to present and pitch the solutions our team can bring to a problem.



Satpal Singh,
32 years old
Communications and
public relations

Coming from the media industry, this is new for me. I’ve always been interested in tech and coding as a hobby. When I came across this programme, I saw it as a great opportunity. We get to use Google Cloud and Gemini, which are not otherwise accessible. Our capstone project will involve creating an AI-powered gaming retail store using a personalised AI engine to match games to customers’ lifestyles.



Kumara Ruben,
23 years old
Computer Science student

I couldn’t pass up the opportunity to deepen my understanding and application of AI to real-world challenges through the Gamuda AI Academy. For our capstone project, my team and I are creating an AI-powered touring app. I plan to contribute to AI-driven projects in business automation when I join the workforce.



James Imran Miller,
39 years old
Business development and
project management

With over 14 years of experience in business development and project management, I see the growing importance of data in corporate decision-making. I hope to use these talents in a consultancy or business analyst role, driving organisational success through data-driven solutions.



FURTHER EXPANSION INTO THE UK

Gamuda continues to diversify its portfolio with its recent acquisition of the Woolwich Purpose-Built Student Accommodation (PBSA) in a joint venture (JV) with Singapore-based private equity firm Q Investment Partners (QIP) in the United Kingdom (UK).

This new venture joins the ranks of Gamuda's other ongoing projects, such as 75 London Wall that is set to deliver best-in-class ESG office space by the third quarter of 2027 and residential developments like West Hampstead Central and Aldgate, showcasing Gamuda's growing presence in the UK.

What's the JV project about?
A purpose-built student accommodation (PBSA) in London, offering 299 beds with a mix of studio and cluster rooms. This site was once a disused building but is now set to be a buzzing student hub, strategically nestled within the Royal Arsenal regeneration zone with immediate connectivity to multiple rail stations and existing place-making initiatives.

How's the project shaping up?
Gamuda entered the deal at a de-risked position with planning approval,

construction contracts, and demolition works already underway. Our early involvement influenced key project aspects, particularly on sustainability initiatives. We set a BREEAM Excellent target, implementing an all-electric energy system with air source heat pumps and photovoltaic (PV) panels, and connection to future district heating networks.

We are presently developing our team's in-house development and investment management capabilities to expand our footprint in the region further.

What's our strategy for the UK portfolio?
Quick Turnaround Projects (QTPs) strategy targets opportunistic investments with high internal rates of return, and aims for a five-year or less investment timeframe.

We started with West Hampstead Central and Aldgate, establishing our brand presence in the UK. Then we capitalised on 75 London Wall—a prime office asset located in London's financial district. Top tenants prioritised quality, seeking ESG-aligned, premium buildings near talent pools and amenities, driving demand for these properties.

Our recent move into the student housing sector is timely as it addresses a critical shortage, with an estimated one

million or 60 percent of the UK's full-time students lacking access to student beds.

How are we achieving our goals in the UK market?
Partnering with aligned partners, remaining flexible, seizing opportunities, and applying lessons learned. Plus, our ongoing projects have allowed us to build local knowledge and capabilities first hand, with our Gamuda Land team in the UK growing stronger by the day.

What challenges did we encounter?
Navigating the bureaucratic planning approval process in the UK was a hurdle. Tapping onto our local JV partner has helped us overcome most challenges. Rising construction costs were mitigated through Gamuda Engineering's expertise, securing favourable terms and pricing to maintain project viability and profitability.

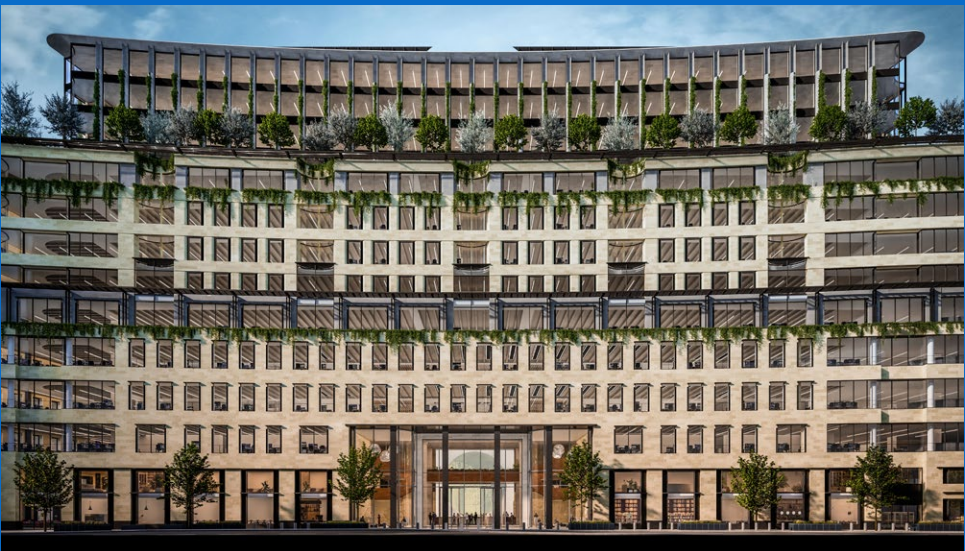
What's next?
Our eyes are set on scaling up our presence in the PBSA sector, with a target portfolio of 1,500 beds across multiple assets in London and key regional cities in the UK. Additionally, we'll continue building our in-house capabilities to establish a sustainable real estate business in the UK.



Read about the student housing project

PROGRESS ON 75 LONDON WALL

Gamuda Land and Castleforge obtained full consent for the redevelopment of 75 London Wall. This milestone allows construction to begin, a step forward to create sustainable, best-in-class office spaces in London, retaining 89 percent of the building's structure and targeting top certifications like BREEAM 'Outstanding' and WELL Core 'Platinum'.



Gamuda formed a GBP100 million (RM603.21 million) UK student housing JV with Q Investment Partners in July 2024. The project, located behind the tree, is set for practical completion in two years. It will be ready to welcome its first batch of students for the 2026 (Sept) academic year.



[L-R] Datuk Ho Kay Tat (The Edge Media Group Publisher and Group CEO), E Jacqui Chan (City and Country Senior Editor), Tang Meng Loon (Gamuda Land Club Operations and Townships Director), Wong Siew Lee (Gamuda Land COO), Au Foong Yee (The Edge Editor Emeritus and the awards' chief judge), and Kathy Fong (The Edge Editor-in-Chief).

JADE HILLS CLINCHES GOLD AGAIN

Jade Hills has secured the Gold Award in the 10 Years and Above in the Non-strata Residential category at The Edge Malaysia's Best Managed and Sustainable Property Awards 2024. Notably, this is the second time Jade Hills has received this honour, having first won Gold in 2019!

This prestigious award benchmarks Malaysian property management practices against global best-in-class standards and is highly respected in the industry for its rigorous evaluation process. It covers management excellence, sustainability practices and community engagement.

The awards are judged by a panel of industry experts who conduct site assessments, review comprehensive documentation and interview management teams to select the winners.

This victory underscores Gamuda Land's commitment to creating environmentally-friendly and community-centric townships where people can live, work, play and grow.

Congratulations to the team on this outstanding accomplishment!





[L-R] David Enticknap (CEO of II Research), Clarence Boudville (Gamuda Senior Group General Manager of Investor Relations), Ong Jee Lian (Group Chief Communications and ESG Officer), Ewan Yee Yew Weng (Gamuda Australia Chief Executive Officer), David Ng Kit Cheong (Gamuda Land Chief Financial Officer), Angus Liew Bing Fooi (Gamuda Land Vietnam Operations Chairman), and Carvin Lee (Asia Sales Director of II Research).

INVESTOR RELATIONS TAKES CENTRE STAGE IN HONG KONG



2024 ASIA (EX-JAPAN) EQUITIES AWARDS CEREMONY

The best investor relations and executive teams had their day on stage at the awards ceremony.

Gamuda was honoured as among the top three best Asian companies in Industrials (including Infrastructure), the Most Honoured Companies for the Rest of Asia, No. 2 for Chief Executive Officer, No. 2 for Environmental, Social and Governance, No. 1 for Investor Relations Professional, and No. 3 for Overall Investor Relations.

The ranking by Institutional Investor Research (II Research) was based on votes from 5,894 investors, portfolio managers and analysts from 1,388 global firms.

The recognition further highlights Gamuda's strong financial performance, exceptional management, and proactive investor relations approach, which have

driven consecutive project victories in Australia, Taiwan, Vietnam, Singapore, the United Kingdom and Malaysia.

Congratulations once again to all colleagues who have been instrumental to our success.

31ST CITIC CLSA INVESTORS' FORUM

The blurring lines between tech and other sectors; geopolitics (think the US versus the rest of the world); rising protectionism; and how to make money off artificial intelligence (AI) - these burning issues were discussed at the 31st CITIC CLSA Investors' Forum.

Almost 400 companies and 1,700 investors from investment firms across Asia, Europe and the US convened this year, and Gamuda was one of 12 Malaysian companies that participated.

Our team, which included Justin Chin Jing Ho (Gamuda Engineering Managing Director), Ewan Yee Yew Weng (Gamuda Australia Chief Executive Officer), Angus

Liew Bing Fooi (Gamuda Land Vietnam Operations Chairman), David Ng Kit Cheong (Gamuda Land Chief Financial Officer) and Clarence Boudville (Gamuda Senior Group General Manager of Investor Relations), met over 40 existing and potential shareholders who are interested in investing in our company.

Each of them explained their relevant business divisions to the potential investors. Investors showed a high level of interest as evidenced by their full meeting schedules!

In total, they had 13 meetings over two days. We're glad to share that several investors were happy shareholders, and many others expressed appreciation that we fielded a full C-suite management team. This is one of many events that packs the Investor Relations department's calendar every year!



The Edge BRC awards are known for their rigorous evaluation of large listed companies.

Highly esteemed in Corporate Malaysia, The Edge Billion Ringgit Club (BRC) 2024 has recognised Gamuda with four prestigious awards among 181 corporate companies:

- **Company of the Year**
- **Big Cap Companies (RM10b to RM40b Market Capitalisation):** Highest Growth in Profit After Tax Over Three Years
- **Construction:** Highest Growth in Profit After Tax Over Three Years
- **Best Corporate Responsibility Initiatives:** Big Cap Companies RM10b to RM40b Market Capitalisation



QUARTET OF TRIUMPHS

COMPANY OF THE YEAR



[L-R] Yang Berhormat Senator Tengku Datuk Seri Utama Zafrul Tengku Abdul Aziz (Minister of Investment, Trade and Industry), Yang Amat Berhormat Dato' Seri Diraja Anwar bin Ibrahim (Prime Minister of Malaysia), Dato' Lin Yun Ling (Group Managing Director), and Tan Sri Tong Kooi Ong (Chairman of The Edge Media Group).

The coveted Company of the Year evaluates returns to shareholders over three years (20 percent), growth in profit after tax over three years (30 percent), and returns on equity over three years (20 percent) and corporate responsibility commitments (30 percent).

There are 48 sectoral corporate awards based on three categories (Highest Return on Equity, Highest Growth in Profit, and Highest Returns to Shareholders) for 16 sectors. The Highest Growth in Profit After Tax award recognises our consistent profitability from FY2020 to FY2023, factoring in growth and stability.

Meanwhile, the Best Corporate Responsibility Initiatives award is evaluated based on a company Environmental, Social and Governance (ESG's) performance.

These quartet of triumphs underscores Gamuda's leadership in sustainable growth, profitability, and corporate responsibility.

Appreciation goes to our colleagues for their hard work and perseverance that has kept us among Malaysia's top-performing companies and achieving excellence across our businesses.



[Standing L-R] Faris Mohd Yusof (Gamuda Engineering Executive Director), Ong Jee Lian (Group Chief Communications and ESG Officer), Khariza Binti Abd Khalid (Gamuda Land Executive Director), Siti Ezyana Binti Syed Jaafar (Chief Integrity and Governance Officer), Chu Wai Lune (Gamuda Land Chief Executive Officer).

[Seated L-R] Justin Chin Jing Ho (Gamuda Engineering Managing Director), Dato' Lin Yun Ling (Gamuda Group Managing Director), and Low Chee Yen (Gamuda Capital Chief Investment Officer).



A WORLD OF FUN AWAITS: GAMUDA LUGE GARDENS, FUNPARK

Nestled within the lush landscapes of Gamuda Luge Gardens is more than just an amusement park that offers a diverse array of attractions for family enjoyment. Its highlights include the famous Skyline Luge, Big Bucket Splash, and the family-friendly FunPark.

Amarhan Leuchamanan, Head of Placemaking of Leisure and Hospitality, speaks to us about "Where Xcitement Meets Fun". He began his journey with the company in 2022 as a Waterpark Operations Manager at SplashMania, Gamuda Cove. His early involvement allowed him to leverage his expertise to enhance operational standards for large-scale recreational facilities, making a significant impact on the project's success.

Reflecting on the event, Amarhan recalled one of the most memorable moments: an unexpected thrill—a race down the Luge between Selangor Chief Minister, Y.A.B. Dato' Seri Haji Amirudin Bin Shari and Gamuda Chairman, YBhg Tan Sri Dato' Setia Haji Ambrin bin Buang. Clad in sleek, colourful gear, they plunged down the track, their faces alight with exhilaration. The leaders' enthusiasm was infectious, setting the tone for an event that was both thrilling and heartfelt.



Amarham's (left) extensive expertise in improving operational standards includes past roles at Sunway Lagoon Malaysia, Resort World Genting, Trans Studio Bali, and Doha Oasis Quest.



Y.A.B. Dato' Seri Haji Amirudin Bin Shari, Selangor Chief Minister and the other VIPs at the event experiencing the gravity ride at Skyline Luge Kuala Lumpur.

"As the clock approached 8:00 PM, the park's celebratory mood reached its zenith. The countdown began, and in a dramatic build-up, the park plunged into darkness. A spectacular fireworks display erupted, filling the sky with colours. A fire dance performance added to the magic, captivating the crowd," Amarhan recounted.

THE CHALLENGES AND TRIUMPHS OF FUNPARK

Behind the scenes, the path to the opening was fraught with challenges. Amarhan's teams were meticulously finalising the park's features, including the debut of two standout attractions: The Eye of Gardens, Malaysia's tallest and biggest Ferris Wheel in a theme park and the thrilling Vroomerang coaster.

"The key challenges were coordinating across departments—operations, marketing, local authorities, vendors, technical support, and safety inspections—while resolving parking capacity issues. We tackled this with action item lists, clear task ownership, and streamlined communication led by our operations team," he said.



FunPark Operations Team

"Safety remained a priority throughout. Rigorous inspections during construction ensured compliance with building codes, while regular checks maintain ride and facility safety. We collaborate with authorities like the Fire and Rescue Department (BOMBA) and Civil Defence Department (APM) to conduct safety drills and train staff in emergency response, first aid, and crowd management, ensuring a secure environment for all visitors," he continues.

The rides and attractions undergo meticulous testing to meet the highest safety standards. FunPark adheres to guidelines set by the Malaysian Department of Safety and Health (DOSH), the American Society for Testing and Materials (ASTM) and TUV Nord. These standards guarantee that every aspect of the park delivers a secure and enjoyable experience.

FunPark offers a wide range of attractions for all ages, including thrilling rides like Vroomerang, interactive rides, and the Big Bucket Splash. Vroomerang, a twisting steel coaster, quickly became a crowd favourite, providing a heart-pounding adventure. The park also features diverse dining options, from Ilaollao to A&W. In addition to entertainment, FunPark is a versatile venue for corporate team-building events, school excursions, and university



Spin, turn and slide on a 10-metre-high track on Vroomerang.

trips, blending fun and functionality for all group needs.

"We are introducing new strategies to improve the guest experience continually. One such innovation is the GL Clix booth, a digital photo service that captures visitors' moments throughout the park.

"The GL Play team is delighted to be part of this project. They value the opportunity to contribute to creating an exceptional "where FUN meets you" kind of experience for guests and are excited about the challenges and innovations involved," Amarhan stated.

In five years, Amarhan and his team aim for FunPark to be a leading family entertainment destination in Northern Klang Valley, renowned for our innovative attractions and exceptional guest experiences. Upcoming developments include interactive skill

games like Pyramid Smash, Lobster Pot, Basket Ball and Sub Soccer.

The team is also committed to sustainability, with plans to reduce waste, optimise energy use and implement eco-friendly technologies such as automated ticketing systems.

With a clear vision and a proactive approach, Gamuda Luge Gardens, FunPark is set to continue its journey of success, delivering memorable experiences while staying ahead of industry trends.

Do not miss out—click the link below to unfold the excitement of the grand launch of Gamuda Luge Gardens!



Gamuda Luge Opening



Park Homes will be rolled out as The Clove in Gamuda Cove, Gamuda Gardens, and twentyfive7.

TRANSFORMING HOMES

Homebuyers are increasingly seeking a better quality of life instead of just putting a roof over their heads. To the current generation, priorities are shifting towards sustainable, biophilic design that promotes healthy living and a connection with nature and community.

Following an intensive three-month study involving over 3,000 diverse individuals who have expressed these desires, Gamuda Land introduced Park Homes. The new typology based on individual customisation breathes new life into the usual conventional terrace layout.

“Our designers came up with a better way to optimise space. With Park Homes, homebuyers can experience up to 25 percent of centralised green space, with 10 percent dedicated to individual

gardens,” said Chu Wai Lune, Chief Executive Officer of Gamuda Land.

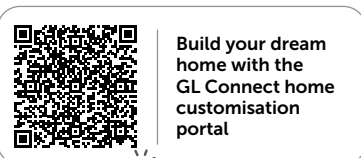
The result? It is like having a garden for your garden, where children in the neighbourhood can play together, and families can enjoy the outdoors within their own secure microcosm.

On top of that, the respondents also emphasised the importance of home layout personalisation. With just a mouse click or a swipe on the notepad, buyers can customise their dream home on our GenAI platform, minimising the need for costly renovations after move-in.

“This integrated digital journey, a first in the local property industry, not only simplifies the home buying process but also empowers our customers with a profound sense of ownership and involvement,” added Chu.



Forbes features Gamuda Land's digital customisation for housing



Build your dream home with the GL Connect home customisation portal

SPOTLIGHTS



SECURING OUR BIGGEST PROJECT TO DATE IN TAIWAN

The Group concludes October on a high note as we clinched our biggest and seventh project in Taiwan, the RM4.3 billion design and build contract to deliver the Xizhi Donghu Mass Rapid Transit (MRT).

The Department of Rapid Transit Systems, New Taipei City Government awarded the project.

An additional works contract, valued at RM10.8 billion, is set to follow upon instruction from the New Taipei City Government before the Xizhi Donghu MRT contract ends, bringing the total project value to RM15.1 billion.

This achievement underscores our ability to consistently secure high-value projects in competitive international markets and reflects the trust Taiwanese authorities place in our expertise and delivery capabilities.

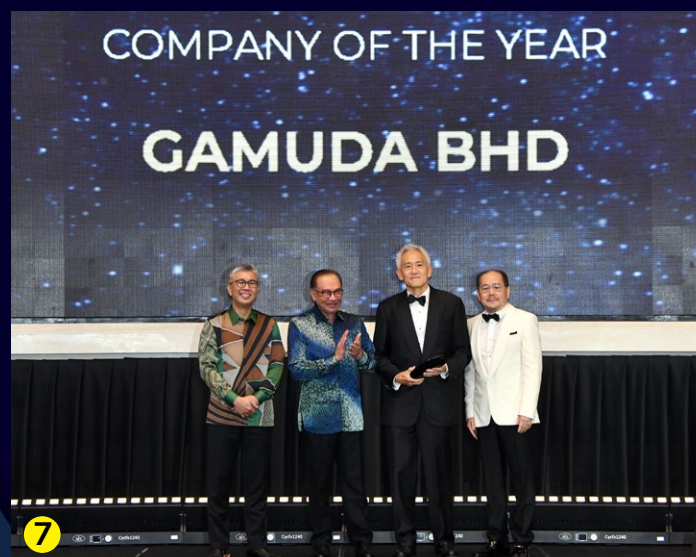
The project scope includes 5.78 km of elevated viaducts and trackwork, six above-ground stations and extensive system works such as rolling stock, power supply, signalling, platform screen door, communication system, central monitoring system, auto fare collection system and depot maintenance equipment.

The project will be delivered by a 75:15:10 unincorporated joint venture between Gamuda and two Taiwan-based companies - MiTAC Information Technology Corp and Dong Pi Co Limited. The project is estimated to be completed within seven years.

Once completed, the MRT alignment will significantly enhance Taiwan's urban transportation network, connecting Taipei's Neihu District and New Taipei City's Xizhi District.



1. Gamuda Taiwan won the Excellent Honour in Public Construction Quality Award 2024 for Guantang Marine Bridge project. The prestigious accolade, received by our Deputy Group Managing Director, Dato' Ir Ha Tiing Tai (right), recognises our engineering excellence and commitment to safety!
2. The Group was honoured as 1st Runner-Up at the SAP Customer Excellence Awards 2024 for our exceptional HCM Transformation. GEMS has significantly enhanced human resources operations across five countries, improving engagement and efficiency.
3. Gamuda Land was recognised at the MalaysiaGBC Leadership in Sustainability Awards 2024 for its exceptional commitment to sustainability, earning the Platinum Award for Innovation in Sustainability, the Gold Award for Business Leadership in Sustainability, and a Merit Award for the Wetland Arboretum as an Outstanding Green Institutional Building.
4. Sungai Rasau Water Treatment Plant, recognised with a 5-Star Sustainable INFRASTAR certification (Design Stage) by the Construction Industry Development Board and the Innovator of the Year Award by Autodesk ASEAN Innovation Awards 2024, is setting new benchmarks in engineering solutions!
5. John Lim Ji Xiong, Group Chief Digital Officer, emphasises the importance of support at every level to drive technological advancement and innovation. Gamuda's Innovation Hub fosters a culture of upskilling and continuous learning through initiatives such as Gamuda AI Academy, Masterclass, and the Data Hero Programme. This encourages all employees to engage with and contribute to the company's digital transformation journey.
6. Celadon City's final phase is complete! Nestled in lush green meadows, Diamond Precinct offers world-class living, blending nature's serenity with top-tier amenities for a thriving, vibrant community.



7. Gamuda shines at The Edge Billion Ringgit Club Awards 2024 with four major wins, including Company of the Year! Thank you to our incredible team for making this achievement possible!

8. Proud to be recognised with the Gold Award for Renewable Energy at The Star ESG Positive Impact Awards 2024! This achievement reflects our unwavering dedication to a greener, sustainable future. Representing the Group, Joshua Kong, Renewable Energy Director of Gamuda Engineering (centre), accepted the award on stage.



9. Congratulations to our Health and Safety Team at Gamuda Australia for winning the annual Work, Health and Safety (WHS) Team of the Year! Their innovative 'Enabling Work' programme is driving excellence in safety and empowering workers to have a voice.

10. Gamuda Taiwan recently hosted 30 delegates from the Chartered Institution of Highways and Transportation Malaysian Branch for their 2024 Technical Study Tour in Taiwan. Our six ongoing projects were in the spotlight for our engineering expertise and innovative solutions, impressing the delegates and showcasing our dynamic regional growth and commitment to excellence.



11. Strength in partnerships uplifts the industry. Our participation in the IEM Sabah 46th Anniversary Dinner, graced by Chief Minister of Sabah Datuk Seri Hajiji Noor and MBAM OneBuild Exhibition 2024, graced by Works Minister Datuk Seri Alexander Nanta Linggi highlights just that. Together, we drive innovative, sustainable engineering solutions and create future-ready communities, showcasing our shared commitment to a greener, advanced future.

12. Over 350 players brought their A-game to the second GL Friends Smash Masters badminton tournament at Gamuda Gardens. The tourney is all about building a strong community and promoting active living within our vibrant townships.

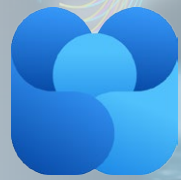


13. The Factory Acceptance Test (FAT) for the Defu Station and Tunnels (CR111) Tunnel Boring Machine (TBM), Daphne, was successfully completed in October 2024, marking a significant milestone in the project's progress.

14. Students from Holy Innocents Primary School voted to name the CR111 TBMs Daphne and Hera, fostering community engagement in this national project.



WORKPLACE



VIVA ENGAGE

WE ARE MIGRATING FROM WORKPLACE TO VIVA ENGAGE

Enhance group-wide communication, foster better collaboration, and boost productivity on the Microsoft Viva Engage employee communication platform.

MIGRATION TIMELINE

Launch across Gamuda Australia and DT Infrastructure: **November 2024**

Launch across Gamuda Berhad: **January 2025**

WHAT'S NEW

- **Seamless Integration:** Enjoy a unified experience with Microsoft Teams, Outlook, and other Office 365 apps.
- **Advanced Engagement Tools:** Leverage features like interactive polls, live events, and rich media sharing.
- **Personalised Experience:** Tailor your feed to follow what matters most to you and your projects.

NEXT STEPS

- Back up your important data from Workplace.
- Keep an eye out for emails and notifications on the migration process.
- Get ready to Engage!

STAY TUNED!